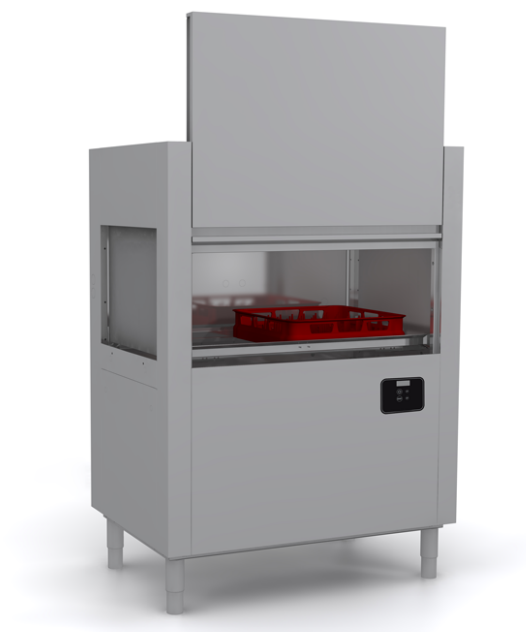


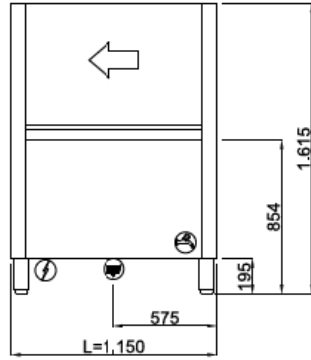
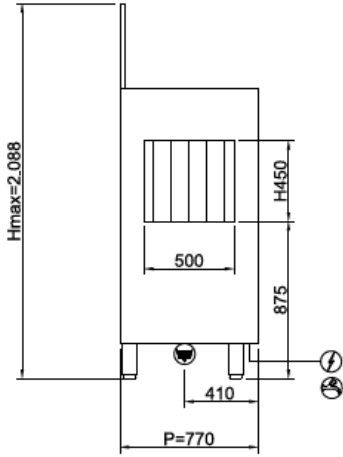
**SYSTEM LINE SL1000**


<b>TYPE</b>	Rack conveyor dishwashers
<b>LINE</b>	SYSTEM LINE
<b>BASKET</b>	500x500
<b>SIZE</b>	1150x770x1615h mm





The SYSTEM Line has been designed to meet the needs of every customer, thanks to the various accessories installable, combining large workloads and optimising spaces available, simplifying operator work and reducing consumption. The models of this line are equipped with a double filtration system that retains all residues, whereas the vertical wash pumps and stainless steel wash arms ensure great performance. SYSTEM is also equipped with counterbalanced doors with double wall and anti-fall system and rounded moulded tanks.

The compact range (with standard installed break-tank), has been designed to obtain large productivity in rather limited spaces, combining efficiency and reduced water consumption. Electricity and water consumption adapts to the productivity required to constantly optimise costs as needed. The double flow wash pump ensures great pressure even against stubborn dirt, while the pre-wash deals with larger residues, gathering them into a drawer filter that is easy to empty. The drying area uses the low temperature air to gently treat even the most sensitive dishes. The 450 mm useful opening allows the introduction of a wide range of dishes, dough trays, baking trays pots and various utensils.



 400V3N+T 21,70kW  
(CABLE NOT PROVIDED)

 G 3/4" M  
55°C  
L=1500

 Ø1"1/2 M  
L=1500

**STANDARD EQUIPMENT**

Basket for glasses dim.500x500x100mm	1
Basket for 18 dishes dim.500x500x100mm	2

**DISHWASHERS FEATURES**

Dimensions - (mm) L - P - H	1150x770x1615h mm
Basket dimensions	500x500 mm
n° baskets/hour	120/60
Passage height max (cm)	450 mm
Total power input	22 kW (50°) - 28,5 kW (15°)
Standard input voltage	400V3N - 50 Hz

**WASHING**

Tank capacity (lt)	70 lt
Washing pump	1,5 kW - 2 hp
Tank heating element (kW)	10,5 kW

**FINAL RINSING**

Boiler heating element (kW)	9,5 kW
Water consumption	150 lt/h
Inlet water temperature (°C)	+50°C
Minimum water pressure (BAR)	2 bar
Water hardness (°f)	7°f - 10°f

**STANDARD EQUIPMENT**

Basket for glasses dim.500x500x100mm	1
Basket for 18 dishes dim.500x500x100mm	2
4 division cutlery insert	1
Basket for glasses dim.500x500x100mm	1
Basket for 18 dishes dim.500x500x100mm	2

**OPTIONAL**

Pressure reducer with pressure gauge	●
Break-Tank and 200W rinse pump	●
Corner dryer unit	●
Option extra power 9,5 Kw	●
Steam condensate module	●
Steam extractor with fan	●
Steam outlet chimney	●
Internal detergent & rinse-aid dosing unit	●
Triple tank filter and stainless steel drawer	●

● Optional Installabile, ◻ Optional not installabile